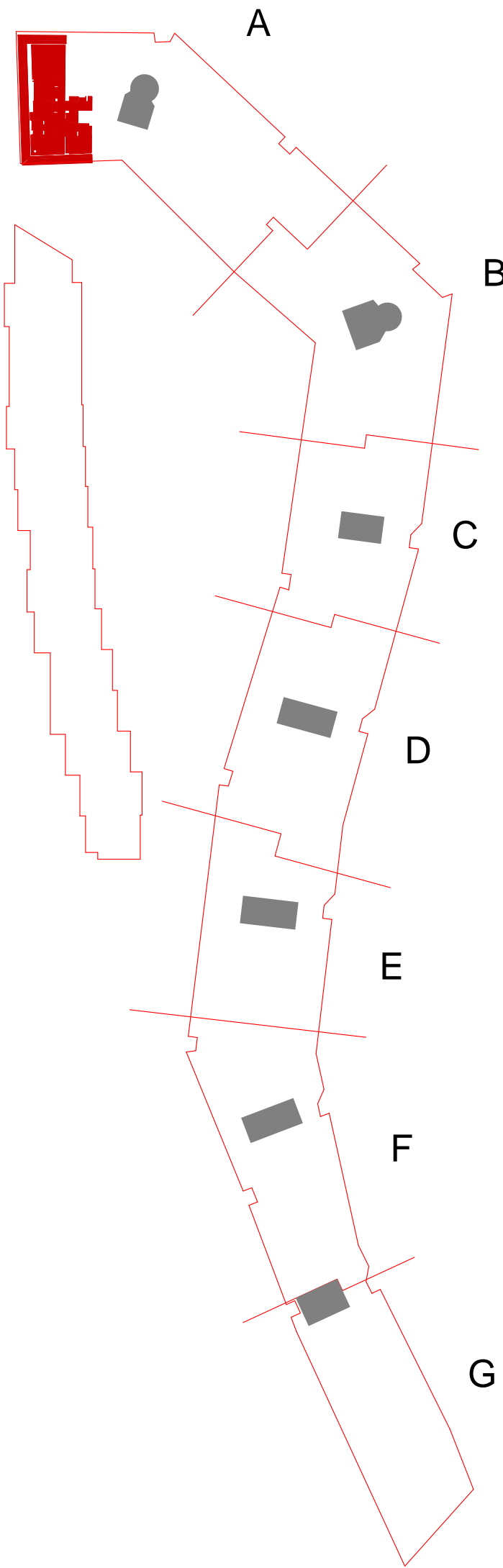
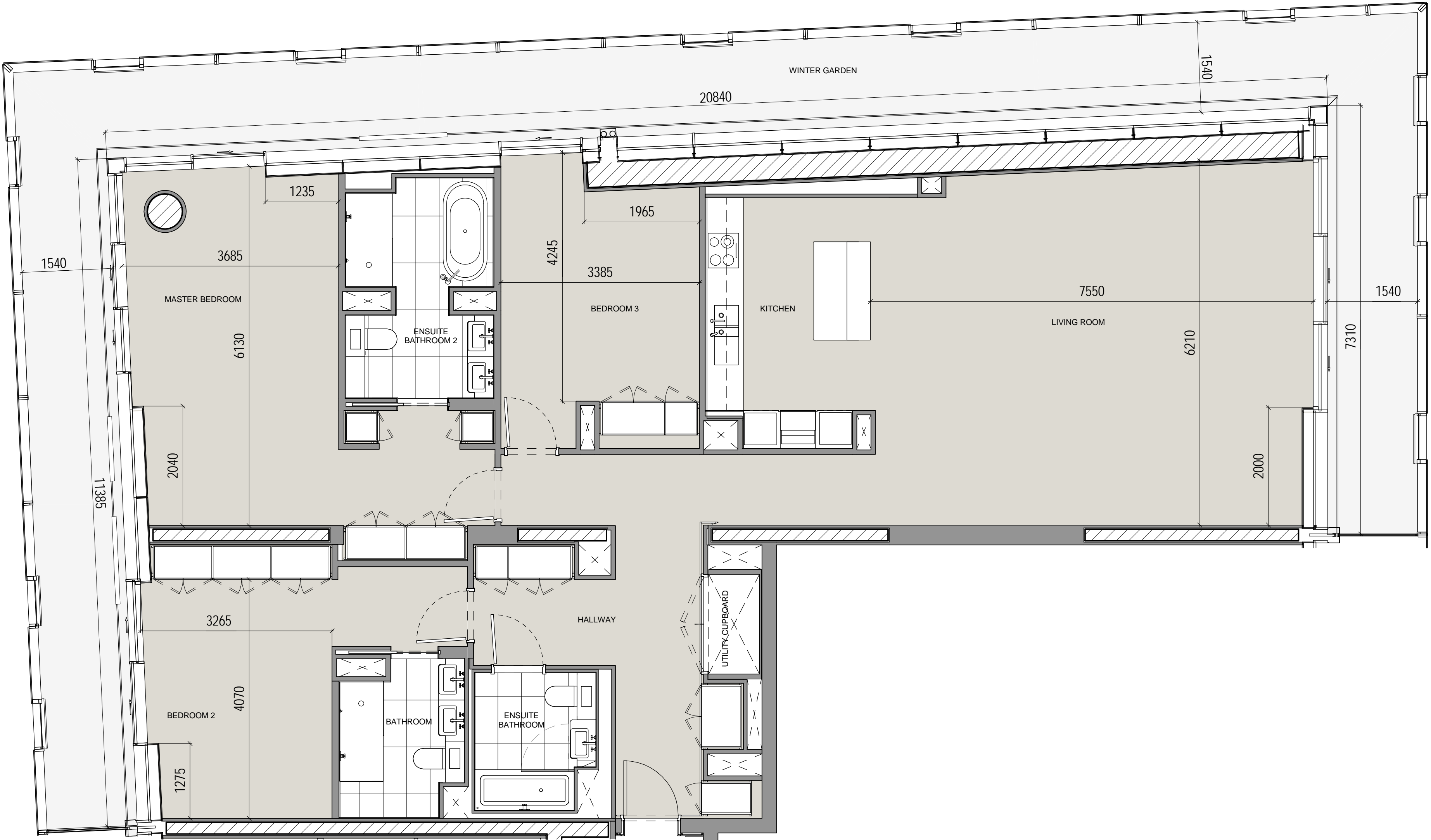


3 Bed
Type 3-08-A

Apartment Numbers:
A.02.04

All layouts and dimensions may be subject to change in line with the coordination of structure and services, together with design development and building tolerances, or events outside the architect's control. Dimensions and layout are subject to final contractor design. The architect accepts no responsibility for any resulting implications or decisions, commercial or otherwise, made on the basis of this information.



<div>Ian Simpson Architects (Partnership) LLP Ian Simpson Architects Ltd</div> <div>Note: This drawing is copyright. Do not scale off dimensions. All dimensions to be checked on site by contractor. Contractor to report any dimensional discrepancies, errors or omissions prior to commencing on site.</div>	<div>NOTE FOR ALL REVISIONS</div> <div>Please see Design Change Log for details of changes.</div> <div>7283-Z1-A-F900-SCH-XX-100</div>	Rev/	Date	Description	Rev/	Date	Description	Rev/	Date	Description	<div>North</div> <div></div>	<div>Project Title</div> <div>Battersea Power Station</div> <div>Phase One - RS-1A</div> <div>Drawing Title</div> <div>Apartment Type 3-08-A</div>	<div>Status</div> <div>For Information</div>		<div>IAN SIMPSON ARCHITECTS</div> <div>Riverside, 4 Commercial Street, Manchester, M15 4RD T +44 (0)161 835 2345 F +44 (0)161 839 4808 5 - 8 Roberts Place, London EC1R 0BB T +44 (0)20 7547 4000 F +44 (0)20 7496 3301 mail@iansimpsonarchitects.com</div>		
														<div>Scale</div> <div>1:50 @ A1</div>		<div>Date</div> <div>30th October 2015</div>	
												<div>Job No</div> <div>7283</div>	<div>Drawing No</div> <div>7283-Z3-A-F900-PL-308A-5000</div>	<div>Revision</div> <div>A00</div>			

IAN
SIMPSON
ARCHITECTS

Riverside, 4 Commercial Street, Manchester, M15 4RG
T +44 (0)161 835 2345 F +44 (0)161 837 4808
S - 8 Roberts Place, London EC1R 0BB
T +44 (0)20 7549 4000 F +44 (0)20 7490 3331
mail@iansimpsonarchitects.com

© Ian Simpson Architects (Partnership) LLP / Ian Simpson Architects Ltd