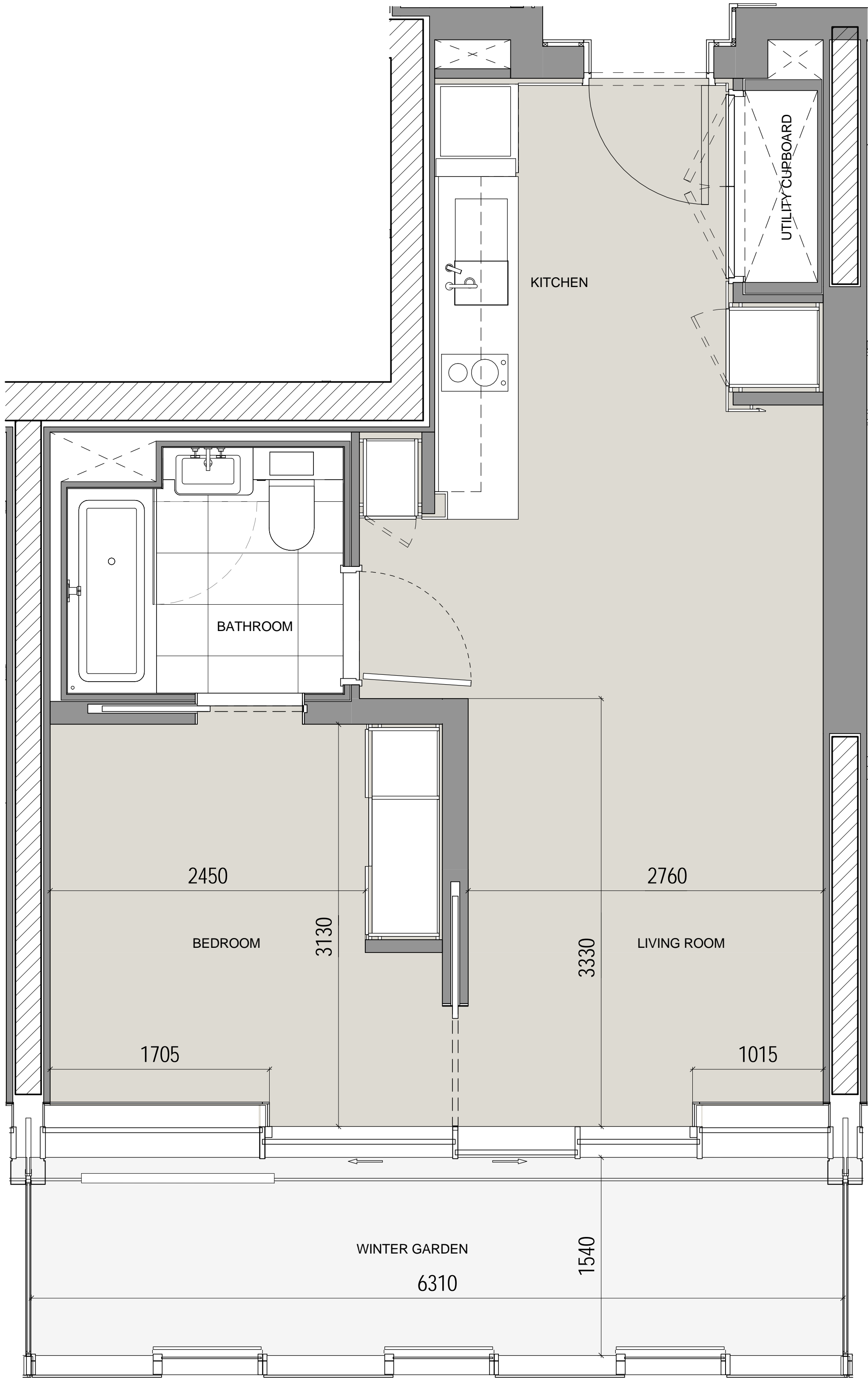


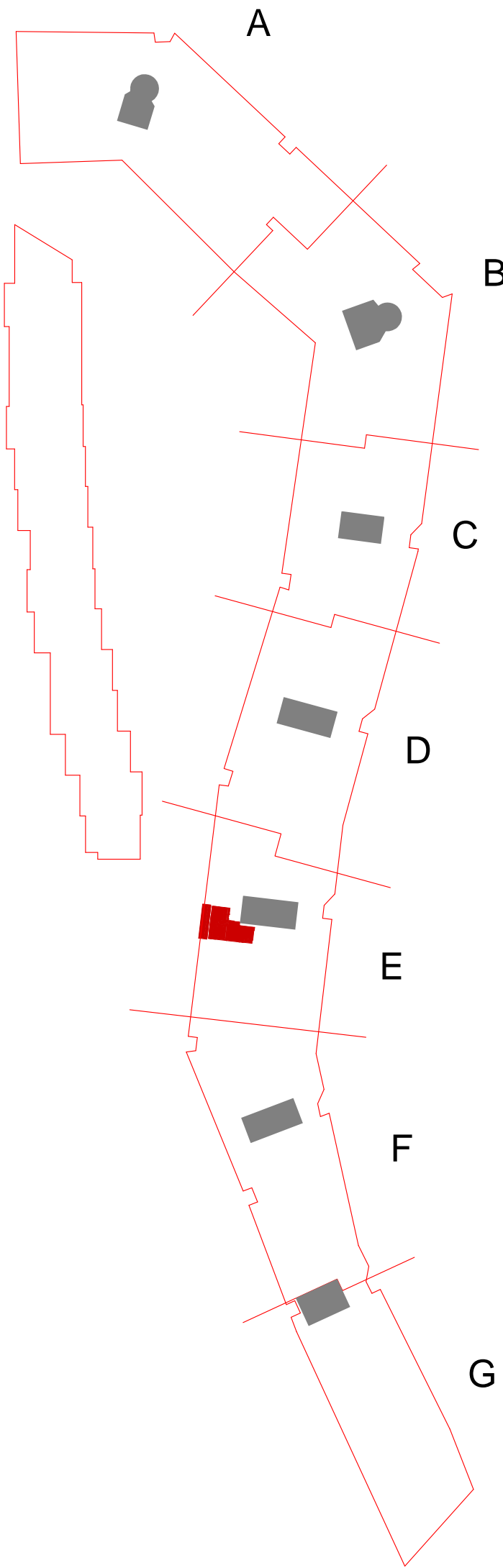
Studio
Type 0-08-A

Apartment Numbers:

- E.05.05
- E.06.05
- E.07.05
- E.08.05
- E.13.05
- E.14.05
- E.15.05



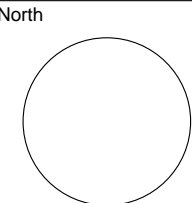
All layouts and dimensions may be subject to change in line with the coordination of structure and services, together with design development and building tolerances, or events outside the architect's control. Dimensions and layout are subject to final contractor design. The architect accepts no responsibility for any resulting implications or decisions, commercial or otherwise, made on the basis of this information.



Ian Simpson Architects (Partnership) LLP
Ian Simpson Architects Ltd
Note:
This drawing is copyright.
Do not scale off dimensions.
All dimensions to be checked on site by contractor.
Contractor to report any dimensional discrepancies, errors or omissions prior to commencing on site.

NOTE FOR ALL REVISIONS
Please see Design Change Log for details of changes.
7283-Z1-A-F900-SCH-XX-100

Rev	Date	Description	Rev	Date	Description	Rev	Date	Description



Project Title
Battersea Power Station
Phase One - RS-1A
Drawing Title
Apartment Type 0-08-A

Status For Information		
Scale	1:25 @ A1	Date 30th October 2015
Job No 7283	Drawing No 7283-Z3-A-F900-PL-008A-5000	Revision A00

IAN SIMPSON ARCHITECTS
Riverside, 4 Commercial Street, Manchester, M15 4RG
T +44 (0)161 835 2345 F +44 (0)161 837 4808
S - 8 Roberts Place, London EC1R 0BB
T +44 (0)20 7549 4000 F +44 (0)20 7490 5311
mail@iansimpsonarchitects.com
© Ian Simpson Architects (Partnership) LLP / Ian Simpson Architects Ltd