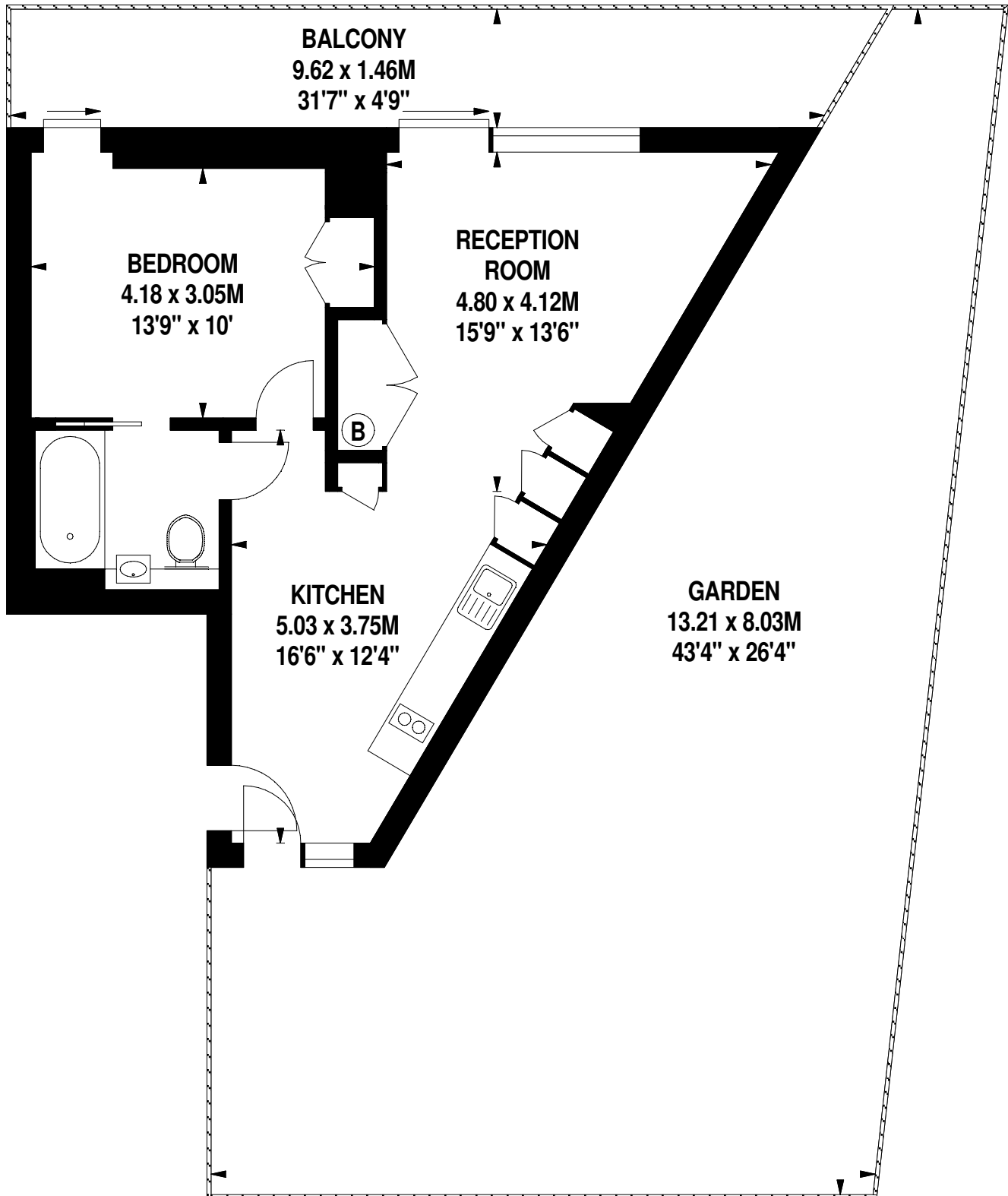
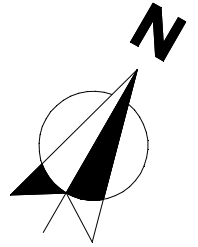


Faraday House, Aurora Gardens, SW11

Approximate Gross Internal Area 48 sq m / 517 sq ft



Ground Floor

Floor Plan produced by Mays Floorplans for Battersea Power Station Estates © . Tel 020 3397 4594

Illustration for identification purposes only, not to scale

All measurements are maximum, and include wardrobes and window bays where applicable