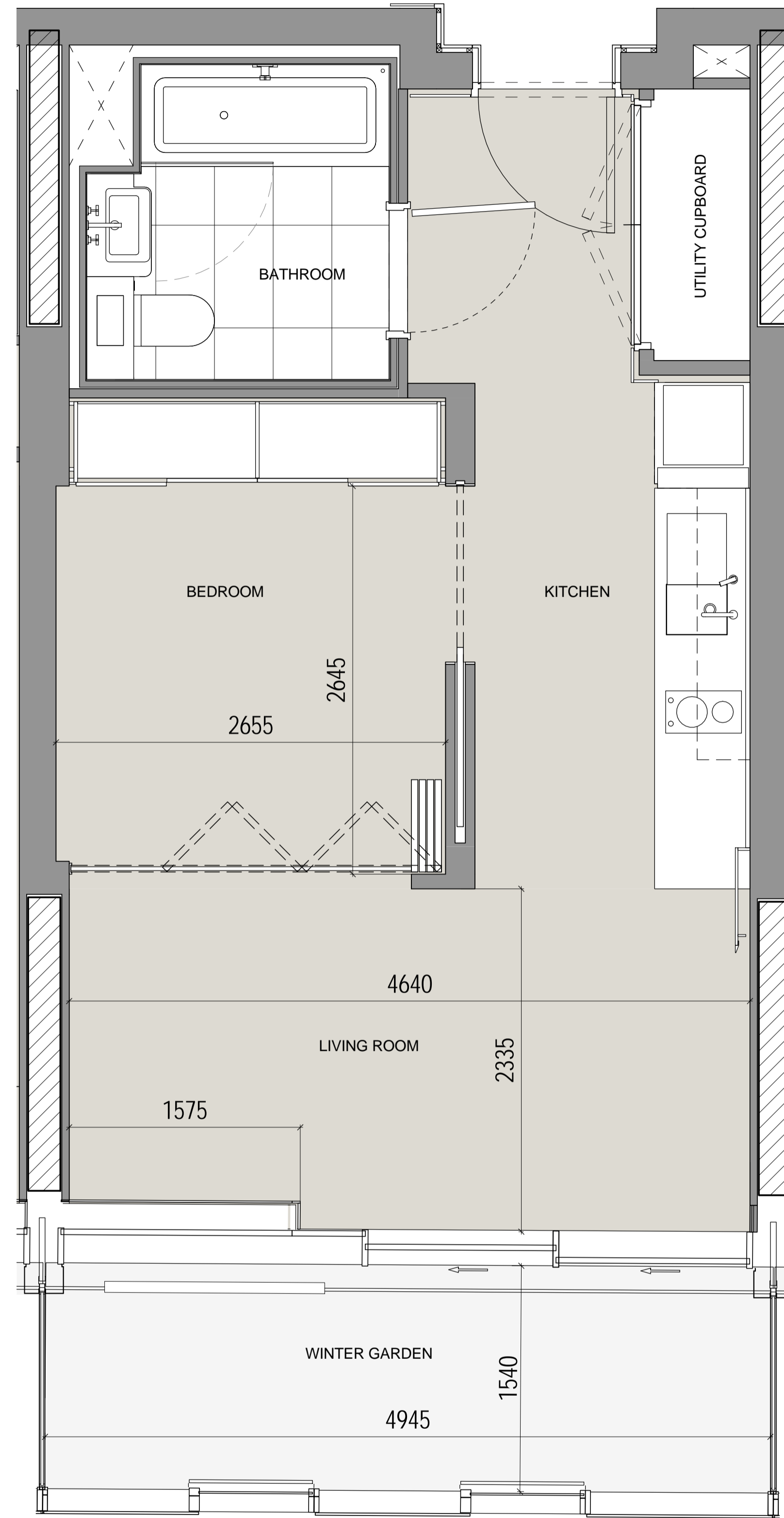


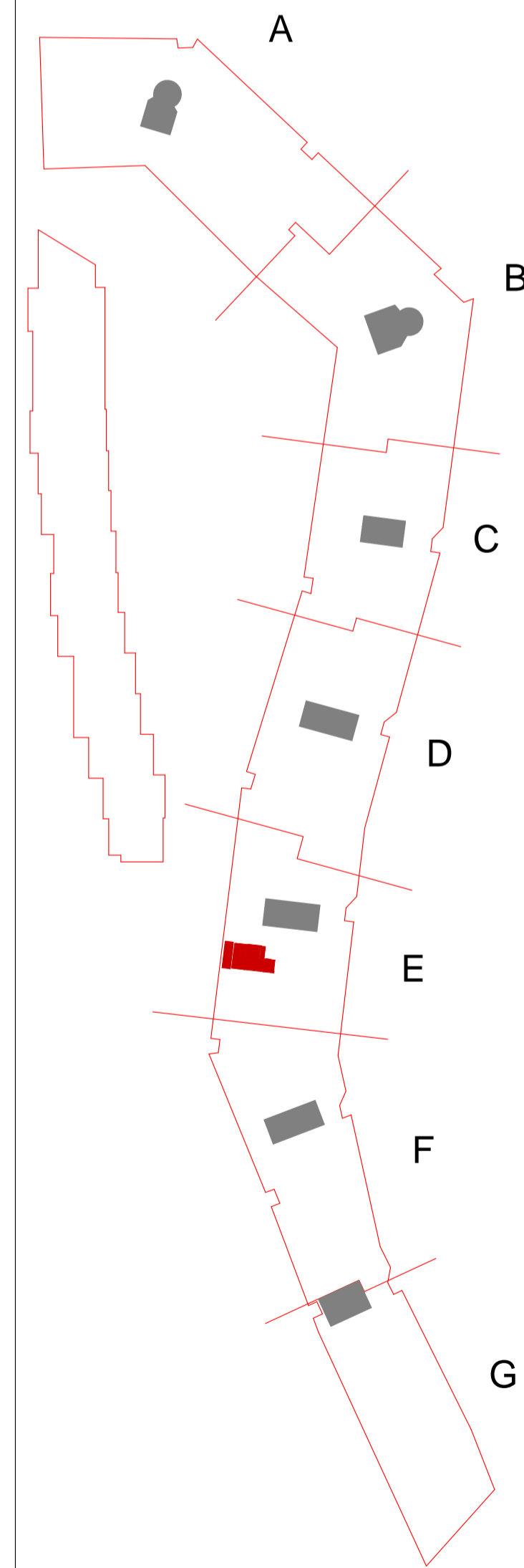
# Studio Type 0-09-B

Apartment Numbers:

- E.02.04
- E.03.04
- E.04.04
- E.09.04
- E.10.04
- E.11.04
- E.12.04



All layouts and dimensions may be subject to change in line with the coordination of structure and services, together with design development and building tolerances, or events outside the architect's control. Dimensions and layout are subject to final contractor design. The architect accepts no responsibility for any resulting implications or decisions, commercial or otherwise, made on the basis of this information.



Ian Simpson Architects (Partnership) LLP  
Ian Simpson Architects Ltd

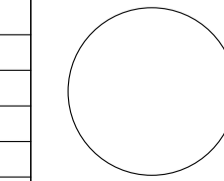
Note:  
This drawing is copyright.  
Do not scale off dimensions.  
All dimensions to be checked on site by contractor.  
Contractor to report any dimensional discrepancies, errors or omissions prior to commencing on site.

NOTE FOR ALL REVISIONS  
Please see Design Change Log for details of changes.

7283-Z1-A-F900-SCH-XX-100

Rev#	Date	Description	Rev#	Date	Description	Rev#	Date	Description

North



Project Title  
Battersea Power Station  
Phase One - RS-1A

Drawing Title  
Apartment Type 0-09-B

Status  
For Information

Scale  
1:25 @ A1

Date  
30th October 2015

Job No  
7283

Drawing No  
7283-Z3-A-F900-PL-009B-5000

Revision  
A00

**IAN SIMPSON ARCHITECTS**

Riverside, 4 Commercial Street, Manchester, M15 4RG  
T +44 (0)161 835 2345 F +44 (0)161 839 4888  
5 - 8 Roberts Place, London, EC1R 8BB  
T +44 (0)20 7549 4000 F +44 (0)20 7490 3311  
mail@iansimpsonarchitects.com

© Ian Simpson Architects (Partnership) LLP / Ian Simpson Architects Ltd