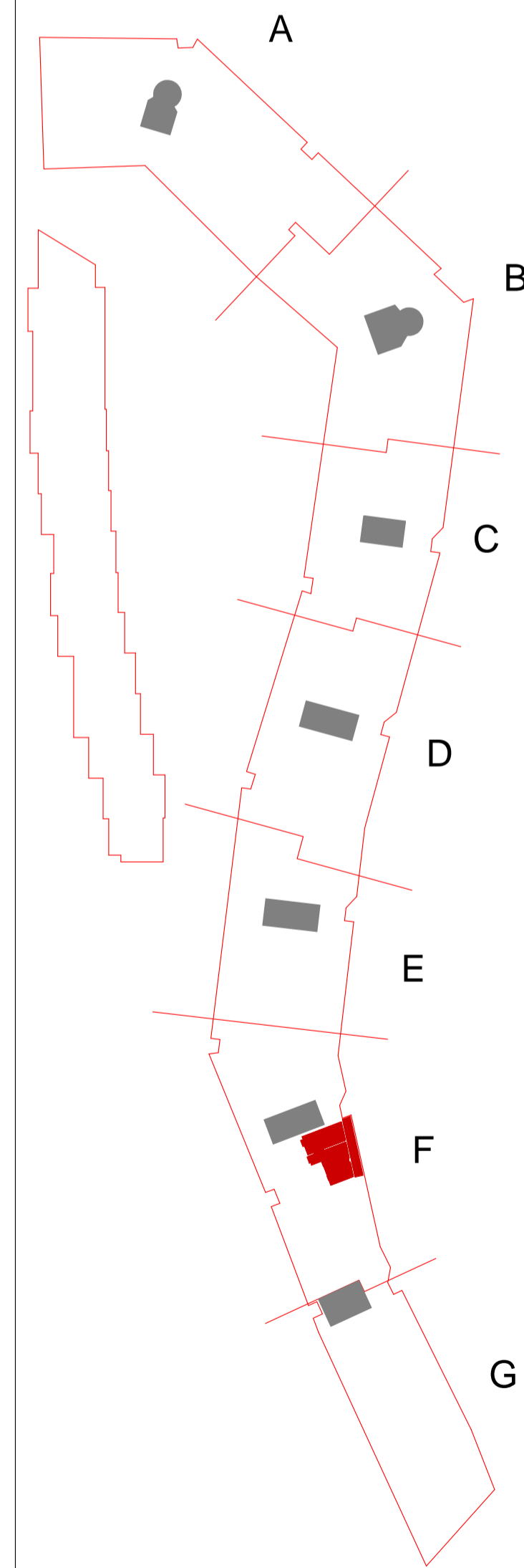
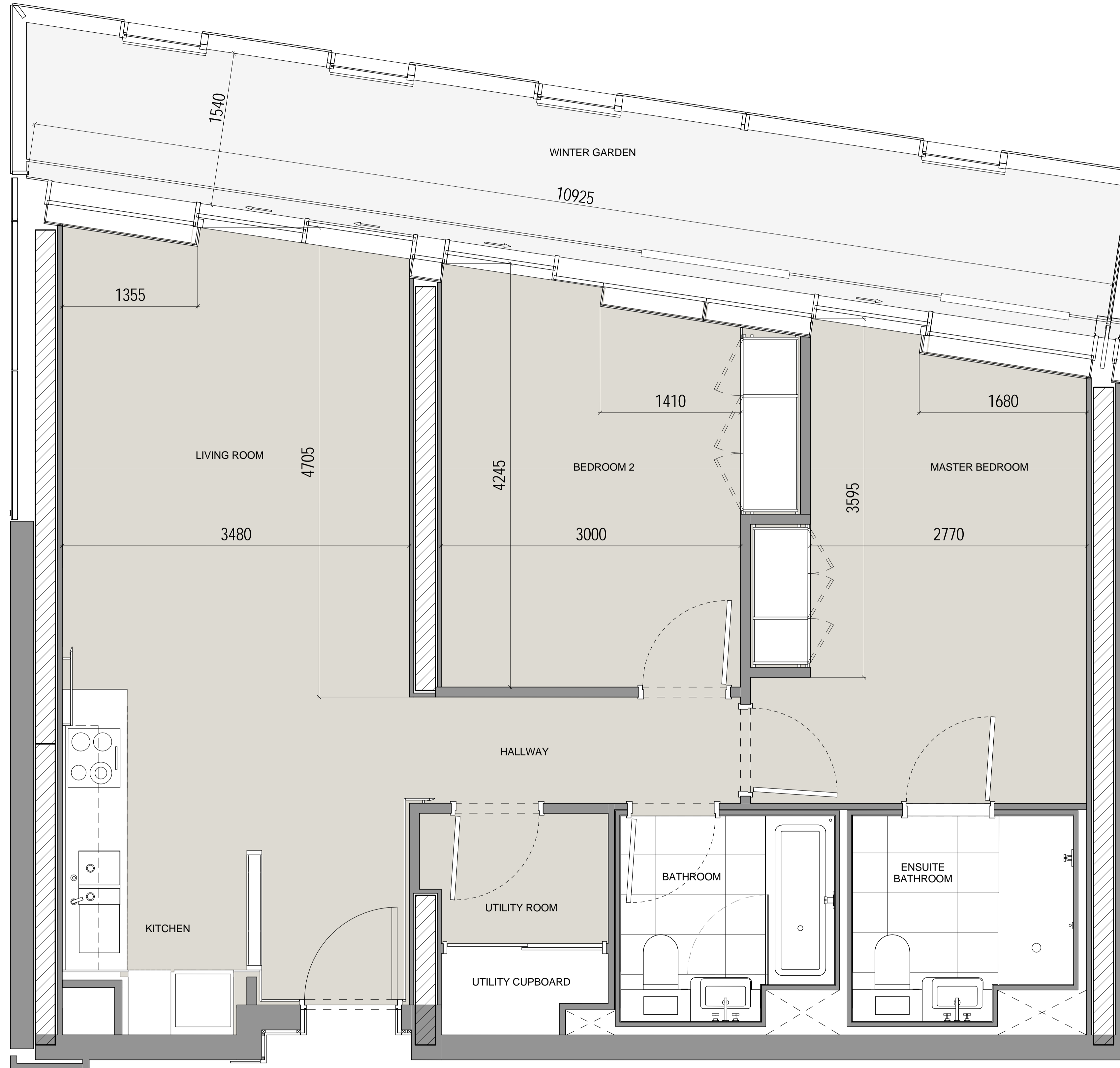


# 2 Bed Type 2-29-B

Apartment Numbers:

- F.01.01
- F.02.01
- F.03.01
- F.04.01
- F.09.01
- F.10.01
- F.11.01
- F.12.01

All layouts and dimensions may be subject to change in line with the coordination of structure and services, together with design development and building tolerances, or events outside the architect's control. Dimensions and layout are subject to final contractor design. The architect accepts no responsibility for any resulting implications or decisions, commercial or otherwise, made on the basis of this information.

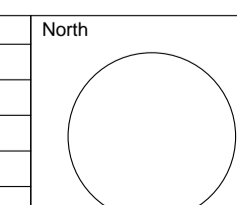


Ian Simpson Architects (Partnership) LLP  
Ian Simpson Architects Ltd  
Note:  
This drawing is copyright  
Do not scale off dimensions.  
All dimensions to be checked on site by contractor.  
Contractor to report any dimensional discrepancies, errors  
or omissions prior to commencing on site.

NOTE FOR ALL REVISIONS  
Please see Design Change Log  
for details of changes.

7283-Z1-A-F900-SCH-XX-100

Rev	Date	Description	Rev	Date	Description	Rev	Date	Description



Project Title  
Battersea Power Station  
Phase One - RS-1A

Drawing Title  
Apartment Type 2-29-B

Status  
For Information

Scale: 1:25 @ A1 Date: 30th October 2015

Job No: 7283 Drawing No: 7283-Z3-A-F900-PL-229B-5000 Revision: A00

**IAN SIMPSON ARCHITECTS**

Riverside, 4 Commercial Street, Manchester, M15 4RG  
T +44 (0)161 835 2345 F +44 (0)161 837 4888  
5 - 8 Roberts Place, London, EC1R 8BB  
T +44 (0)20 7549 4800 F +44 (0)20 7490 3311  
mail@iansimpsonarchitects.com

© Ian Simpson Architects (Partnership) LLP / Ian Simpson Architects Ltd