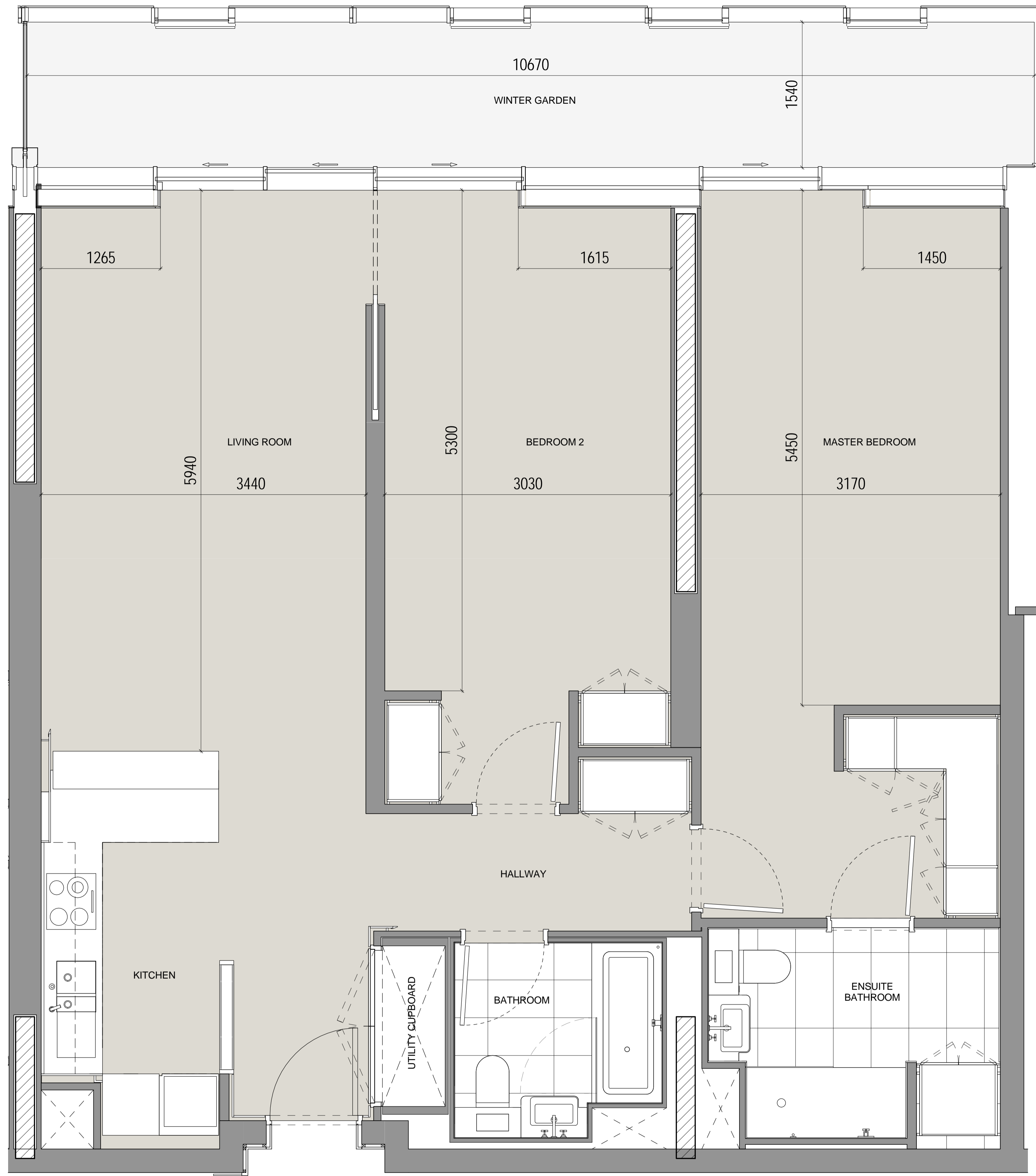
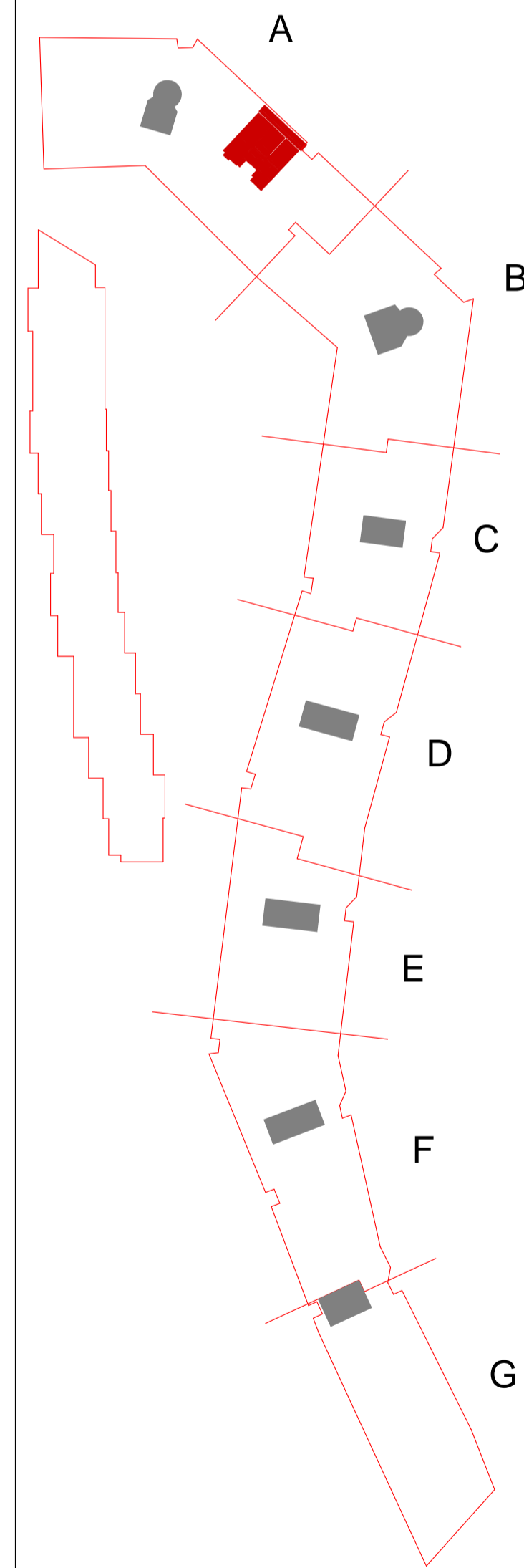


2 Bed Type 2-08-B

Apartment Numbers:
A.10.02



All layouts and dimensions may be subject to change in line with the coordination of structure and services, together with design development and building tolerances, or events outside the architect's control. Dimensions and layout are subject to final contractor design. The architect accepts no responsibility for any resulting implications or decisions, commercial or otherwise, made on the basis of this information.

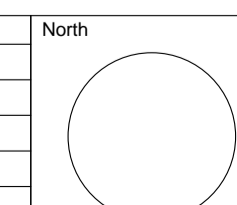


Ian Simpson Architects (Partnership) LLP
Ian Simpson Architects Ltd
Note:
This drawing is copyright.
Do not scale off dimensions.
All dimensions to be checked on site by contractor.
Contractor to report any dimensional discrepancies, errors or omissions prior to commencing on site.

NOTE FOR ALL REVISIONS
Please see Design Change Log for details of changes.

7283-Z1-A-F900-SCH-XX-100

Rev	Date	Description	Rev	Date	Description	Rev	Date	Description



Project Title
Battersea Power Station
Phase One - RS-1A
Drawing Title
Apartment Type 2-08-B

Status For Information		Date 30th October 2015
Scale 1:25 @ A1	Revision A00	
Job No 7283	Drawing No 7283-Z3-A-F900-PL-208B-5000	

IAN SIMPSON ARCHITECTS
Riverside, 4 Commercial Street, Manchester, M15 4RG
T +44 (0)161 835 2345 F +44 (0)161 839 4888
5 - 8 Roberts Place, London, EC1R 8BB
T +44 (0)20 7549 4888 F +44 (0)20 7490 3311
mail@iansimpsonarchitects.com
© Ian Simpson Architects (Partnership) LLP / Ian Simpson Architects Ltd